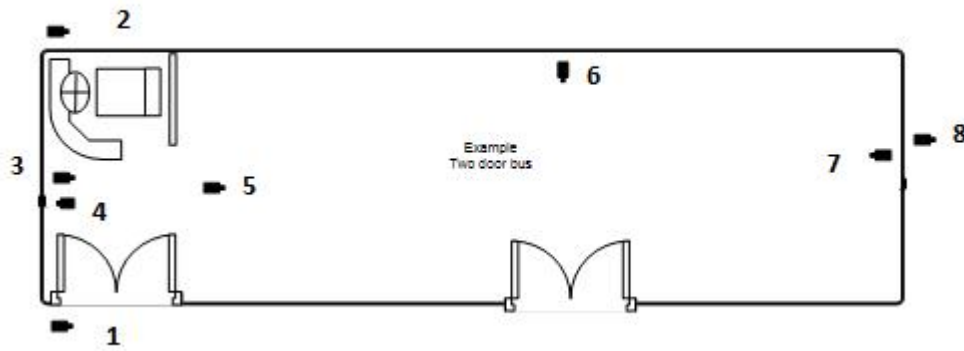




Australia Tourist Bus & Coach CCTV Monitoring & Tracking System

CCTV system Cameras' installation position:



Some cameras' installation examples:



Computer/Mobile App remotely monitoring and GPS tracking(with GPS and 3G or 4G):

The image displays two interfaces. On the left is a computer web interface for vehicle monitoring, showing a map of Hong Kong and a table of vehicle data. On the right is a mobile app interface showing a grid of live CCTV camera feeds from various bus channels.

| Bus | Vehicle | Positioning Time | Longitude | Latitude | Vehicle Status |
|-----|----------|---------------------|------------|-----------|---|
| ☑ | HK Taxi | 2010-12-22 14:35:32 | 114.110623 | 22.277773 | Direction: East, Speed: 0.0, Engine temperature: 0.0, Temp |
| ☑ | AUTO2 HK | 2010-12-22 14:35:34 | 114.203335 | 22.323963 | Direction: East, Speed: 0.0, Engine temperature: 0.0, Temp |
| ☑ | HK98206 | 2010-12-22 14:35:34 | 114.110800 | 22.251183 | Direction: Northeast, Speed: 3063.0, Engine temperature: 0. |



- Each bus/Coach install Five ~ Eight cameras (700TVL/720P/960P), 1 alarm button, 1 LCD display ,also connect with LED control panel (for Driver reminding the mdvr working status)
- Driver alarm button can support network trigger
- Can support user JPEG images capture by management platform remotely and pictures can be stored in the server.
- Support GPS dual modules positioning with higher location accuracy.
- Command center can operate the vehicle at any time by using 3G/ 4G.
- Support 2 TB Hard disk recording, no need format. Plug and display.
- Install file boxes, insert 64GB card ,to achieve HDD and sd card video recording storage at the same time.when vehicle catches fire. It also can guarantee the storage data in the fire box playback completely and provide the evidence for the accidents.
- The supervisor can master the bus running status in all directions and eliminate all kinds of security risks effectively through monitoring management platform.
- Extending LED by RS232/485 can update the advertisements contents (for more information ,please kindly contact us www.alersec.com) bus driving routes and running prompt.
- Can extend people counting system camera to statistic each platform getting on and off flow conditions , offering reference to data management for preventing tickets fee loss effectively.

Application:



AL3000 Mobile DVR:



Mobile DVR Standard accessories:



Vehicle Cameras:



AL-SV3
(indoor with Audio)



AL-MS02/MS01
(Outside Left and Right view)



AL-SV1
(reversing camera)

Other accessories for camera system:



7 inch Screen



Extension cables



Hard Disk



LED Panel

MDVR Order model:

AL3001- (with GPS,support basic recording),Maximum support 8 cameras

(we have many successful Cases for Australia Coaches/Tour buses with AL3001 system).

AL3003-(with 3G and GPS,support live tracking or remotely monitoring),connect 8 cameras;

AL3003-4GW-(with 4G and GPS,support live tracking or remotely monitoring),connect 8 cameras;

AL3005-(with 3G,WIFI and GPS,support live tracking or remotely monitoring),can support WIFI upload automatically to server,connect 8 cameras;

AL3005-4GW(with 4G(FDD-LTE),WIFI and GPS,support live tracking or remotely monitoring),can support WIFI upload automatically to server,connect 8 cameras;

For more information,please kindly contact our sales or send email to info@alersec.com .

Successful Coach/Bus video surveillance Cases in Australia:



.....